

# OP/Station® Industrial Workstations

Customized, Secure, and Ready for Any Environment



732-922-6611

info@inflexionpoint.ai

www.inflexionpoint.ai

## SECURE OPERATIONS

### Rugged Durability. Leading Technology.

OP/Station® secure, customized workstations deliver reliable performance in the most challenging conditions.

**We design and build** our OP/Station industrial workstations to meet the demanding requirements of modern industrial environments. Whether you're in manufacturing, a laboratory, process control, or anywhere precision and reliability are paramount, OP/Stations ensure reliable performance in even the most challenging conditions.

#### Operate Effectively, Anywhere

Our OP/Stations industrial workstations are not just about enduring tough environments; they are about enhancing operational efficiency and productivity. With a focus on customization and scalability, we offer solutions that can adapt to your evolving needs.

- UL Rated, Hazardous Locations: Class I, II, III, Div. 2
- Certifications: UL 508A, UL 50E, FCC Class A, CE, UL 60950 3rd Edition
- NEMA 4/12 or NEMA 4X/12
- Sealed to IP65/66 standards
- Purge kits; IS barriers; signal disconnects
- UPS systems; cooling systems

#### Designs for Every Operating Environment

We offer several standard designs for industrial workstations, each design applicable to a set of applications and environments. From these standard designs, customers may choose to add features and capabilities to meet specific needs in collaboration with our HIP (Hardware Integration Program) engineers.



#### Durability Redefined

Built to withstand harsh conditions, including extreme temperatures, dust, and vibration.



#### Performance Oriented

Workstations include powerful processors and graphics for demanding applications and data intensive tasks.



#### Seamless Integration

Easy integration with existing systems, offering a range of connectivity options.



#### Modular and Scalable

Modular design for easy upgrades and customization, to grow with your needs.

## Designed for Safety and Efficiency

Our OP/Station solutions are not just functional but also safe, efficient, and compliant with industry standards, making them an ideal choice for pharmaceutical and critical infrastructure applications.

## Flexible Mounting Solutions

We offer a variety of mounting options, such as pendant arm, wall-recessed, and ceiling mounts, catering to different spatial requirements. These flexible solutions, like the pendant arm mounts, enhance space efficiency by allowing adjustments and retraction when not in use.

## Ruggedized for Reliability

Our hardware, including thin clients, panel PCs, ruggedized touch displays, and mobile workstations, are engineered to withstand harsh industrial conditions.

## Mobility and Connectivity

Mobile workstations are a standout feature, offering the flexibility to move units as needed within facilities. Equipped with wireless connectivity and heavy-duty batteries for continuous operation, these workstations facilitate rapid reconfiguration of work environments.

## Space Optimization for Pharmaceuticals

Innovative design solutions ensure that even crowded facilities can efficiently accommodate essential computing platforms and visualization displays, optimizing every available space.

## Customization for Specific Needs

Understanding that one size does not fit all, we provide custom solutions for unique operational requirements. This customization can include specific sizes, inputs, communication connections, mounting options, and battery types.

## Compliance and Wireless Integration

We ensure that all OP/Station solutions are compliant with necessary regulatory standards, particularly vital in cleanroom environments. Built-in Wi-Fi capabilities allow for seamless communication, reducing the risks associated with wires in sensitive areas.

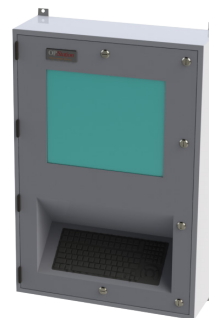
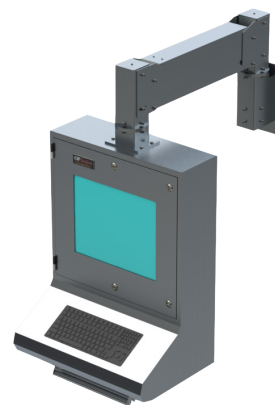
---

## Ready to Learn More?

Discover how OP/Station can transform your industrial workspace into a model of efficiency, safety, and compliance. Visit our website, call, or email us today.



+1-732-922-6611  
info@inflexionpoint.ai  
www.inflexionpoint.ai



TECHNICAL SPECIFICATIONS

Model No	12			15			17			19			19.5			22			23.8																																																																																																																																																																																																																																																																																																																																																																																																																																																																																																																																																																																																																																																																																																																																																																																																																																																																																																																																																																																																																																																																																																																																																																																																																																																																																																																																																																																																																																																																																																																																																																																																																																																																																																																																																																																																																																																																																																																																																																																																																																																																																																																																																																																																																																																																																																																							
Display	Thin-film transistor (TFT) Active Matrix Liquid Crystal, LED Backlit																																																																																																																																																																																																																																																																																																																																																																																																																																																																																																																																																																																																																																																																																																																																																																																																																																																																																																																																																																																																																																																																																																																																																																																																																																																																																																																																																																																																																																																																																																																																																																																																																																																																																																																																																																																																																																																																																																																																																																																																																																																																																																																																																																																																																																																																																																																																									
Type	12.1" diagonal / 4:3																		15" diagonal / 4:3																		17" diagonal / 5:4																		19" / 5:4																		19.5" / 16:9																		22" diagonal / 16:10																		23.8" diagonal / 16:9																																																																																																																																																																																																																																																																																																																																																																																																																																																																																																																																																																																																																																																																																																																																																																																																																																																																																																																																																																																																																																																																																																																																																																																																																																																																																																																																																																																																																																																																																																																																																																																																																																																																																																																																																																																																																																																																																																																																																																																																																																																																																																																																																																																																																													
Size / Aspect Ratio	246 x 184.5 mm (9.7" x 7.3")																		304 x 228 mm (12.0" x 9.0")																		338 x 270 mm (13.3" x 10.6")																		375 x 300 mm (14.8" x 11.8")																		435 x 239 mm (17.1" x 9.4")																		474 x 296 mm (18.7" x 11.7")																		527 x 296 mm (20.75" x 11.67")																																																																																																																																																																																																																																																																																																																																																																																																																																																																																																																																																																																																																																																																																																																																																																																																																																																																																																																																																																																																																																																																																																																																																																																																																																																																																																																																																																																																																																																																																																																																																																																																																																																																																																																																																																																																																																																																																																																																																																																																																																																																																																																																																																																																																													
Image Size (W+H)	SVGA (800 x 600 @60Hz)																		XGA (1024 x 767 @60Hz)																		SXGA (1280 x 1024 @60Hz)																		WSXGA+ HD1080p (1920 x 1080 @ 60Hz)																		WVSXGA+ (1680 x 1050 @ 60Hz)																		HD1080p (1920 x 1080 @ 60Hz)																		HD1080p 1920 x 1080 @ 60Hz																																																																																																																																																																																																																																																																																																																																																																																																																																																																																																																																																																																																																																																																																																																																																																																																																																																																																																																																																																																																																																																																																																																																																																																																																																																																																																																																																																																																																																																																																																																																																																																																																																																																																																																																																																																																																																																																																																																																																																																																																																																																																																																																																																																																																													
Native Resolution	0.308 mm x 0.308 mm																		0.297 mm x 0.297 mm																		0.264 mm X 0.264 mm																		0.293 mm x 0.293 mm																		0.2265 mm x 0.221 mm																		0.282 mm x 0.282 mm																		0.2745 mm x 0.2754 mm																																																																																																																																																																																																																																																																																																																																																																																																																																																																																																																																																																																																																																																																																																																																																																																																																																																																																																																																																																																																																																																																																																																																																																																																																																																																																																																																																																																																																																																																																																																																																																																																																																																																																																																																																																																																																																																																																																																																																																																																																																																																																																																																																																																																																													
Pixel Pitch																																					16.7 million																																																																																																																																																																																																																																																																																																																																																																																																																																																																																																																																																																																																																																																																																																																																																																																																																																																																																																																																																																																																																																																																																																																																																																																																																																																																																																																																																																																																																																																																																																																																																																																																																																																																																																																																																																																																																																																																																																																																																																																																																																																																																																																																																																																																																																																																																																					
Number of Colors	450 nits (cd/m²)																		400 nits (cd/m²)																		170" / 160"																		250 nits (cd/m²)																		178" / 178"																		170" / 160"																		178" / 178"																																																																																																																																																																																																																																																																																																																																																																																																																																																																																																																																																																																																																																																																																																																																																																																																																																																																																																																																																																																																																																																																																																																																																																																																																																																																																																																																																																																																																																																																																																																																																																																																																																																																																																																																																																																																																																																																																																																																																																																																																																																																																																																																																																																																																													
Brightness (white)	178" / 178"																		170" / 170"																		1000:1																		1000:1 (VDP), 20M:1 (dyn)																		3000:1																		1000:1 (VDP), 10M:1 (dyn)																		1000:1																																																																																																																																																																																																																																																																																																																																																																																																																																																																																																																																																																																																																																																																																																																																																																																																																																																																																																																																																																																																																																																																																																																																																																																																																																																																																																																																																																																																																																																																																																																																																																																																																																																																																																																																																																																																																																																																																																																																																																																																																																																																																																																																																																																																																													
Viewing Angle (Hor/Vert)	1500:1																		60,000 hours																																				40,000 hours																		50,000 hours																		60,000 hours																		40,000 hours																																																																																																																																																																																																																																																																																																																																																																																																																																																																																																																																																																																																																																																																																																																																																																																																																																																																																																																																																																																																																																																																																																																																																																																																																																																																																																																																																																																																																																																																																																																																																																																																																																																																																																																																																																																																																																																																																																																																																																																																																																																																																																																																																																																																																													
Contrast Ratio																																																																																																																																																																																																																																																																																																																																																																																																																																																																																																																																																																																																																																																																																																																																																																																																																																																																																																																																																																																																																																																																																																																																																																																																																																																																																																																																																																																																																																																																																																																																																																																																																																																																																																																																																																																																																																																																																																																																																																																																																																																																																																																																																																																																																																																																																																																																										
Backlight Brightness half-life																																																																																																																																																																																																																																																																																																																																																																																																																																																																																																																																																																																																																																																																																																																																																																																																																																																																																																																																																																																																																																																																																																																																																																																																																																																																																																																																																																																																																																																																																																																																																																																																																																																																																																																																																																																																																																																																																																																																																																																																																																																																																																																																																																																																																																																																																																																																										
Video																																																																																																																																																																																																																																																																																																																																																																																																																																																																																																																																																																																																																																																																																																																																																																																																																																																																																																																																																																																																																																																																																																																																																																																																																																																																																																																																																																																																																																																																																																																																																																																																																																																																																																																																																																																																																																																																																																																																																																																																																																																																																																																																																																																																																																																																																																																																										
Input Connectors	HD-15, DVI-I																		HD-15, DVI-D																		DVI-I, DisplayPort																		HD-15, DVI-I																		DVI-I, DisplayPort																		HDMI, HDMI Mini, HDMI Micro, DisplayPort Mini, VGA, BNC																		HDMI, HDMI Mini, HDMI Micro, DisplayPort Mini, VGA, BNC																																																																																																																																																																																																																																																																																																																																																																																																																																																																																																																																																																																																																																																																																																																																																																																																																																																																																																																																																																																																																																																																																																																																																																																																																																																																																																																																																																																																																																																																																																																																																																																																																																																																																																																																																																																																																																																																																																																																																																																																																																																																																																																																																																																																																													
Inputs using Adapter	HDMI, HDMI Mini, HDMI Micro, DisplayPort (DP), DisplayPort Mini, BNC																																																																																																																																																																																																																																																																																																																																																																																																																																																																																																																																																																																																																																																																																																																																																																																																																																																																																																																																																																																																																																																																																																																																																																																																																																																																																																																																																																																																																																																																																																																																																																																																																																																																																																																																																																																																																																																																																																																																																																																																																																																																																																																																																																																																																																																																																																																																									
Input Signal Formats	RGB Analog, Sync Types: Separate (Sep.), Composite (Comp.), Sync-on-Green (SoG), DVI																		RGB Analog, Sync Type: Separate, DVI																		RGB: Sep., Comp., SoG; DVI, DisplayPort																		RGB: Sep., Comp., SoG; DVI, DisplayPort																		RGB: Sep., Comp., SoG; DVI, DisplayPort																		RGB: Sep., Comp., SoG; DVI, DisplayPort																																																																																																																																																																																																																																																																																																																																																																																																																																																																																																																																																																																																																																																																																																																																																																																																																																																																																																																																																																																																																																																																																																																																																																																																																																																																																																																																																																																																																																																																																																																																																																																																																																																																																																																																																																																																																																																																																																																																																																																																																																																																																																																																																																																																																																															
Horizontal / Vertical Scan	30-60 kHz / 50-75 Hz																		31-73 kHz / 50-75 Hz																		5 ms																		14 ms																		25 ms																		24-82 kHz / 50-75 Hz																		5 ms																		14 ms																																																																																																																																																																																																																																																																																																																																																																																																																																																																																																																																																																																																																																																																																																																																																																																																																																																																																																																																																																																																																																																																																																																																																																																																																																																																																																																																																																																																																																																																																																																																																																																																																																																																																																																																																																																																																																																																																																																																																																																																																																																																																																																																																																																																											
Response Time	12 ms																		35 ms																		5 ms																		14 ms																		25 ms																		24-82 kHz / 50-75 Hz																		5 ms																		14 ms																																																																																																																																																																																																																																																																																																																																																																																																																																																																																																																																																																																																																																																																																																																																																																																																																																																																																																																																																																																																																																																																																																																																																																																																																																																																																																																																																																																																																																																																																																																																																																																																																																																																																																																																																																																																																																																																																																																																																																																																																																																																																																																																																																																																											
Electrical																																																																																																																																																																																																																																																																																																																																																																																																																																																																																																																																																																																																																																																																																																																																																																																																																																																																																																																																																																																																																																																																																																																																																																																																																																																																																																																																																																																																																																																																																																																																																																																																																																																																																																																																																																																																																																																																																																																																																																																																																																																																																																																																																																																																																																																																																																																																										
Monitor Input	100 to 240 VAC, 0.4/0.2A, 60/50 Hz or 9.6-36.6 VDC, 2.5 to 0.65 A																		~14.9 W																		100 to 240 VAC, 1.5/0.75 A, 60/50 Hz or 9.6 to 36.6 VDC, 2.5 to 0.65 A																		~16.8 W																		~20 W																		~16 W																		100 to 240 VAC, 0.6/0.3 A, 60/50 Hz and 10.8 to 26.4 VDC, 2.3 to 0.9 A																		~27 W																		100 to 240 VAC, 0.6/0.3 A, 60/50 Hz or 9.6 to 36.6 VDC, 2.5 to 0.65 A																		~26 W																		100 to 240 VAC, 0.6/0.3 A, 60/50 Hz or 9.6 to 36.6 VDC, 2.5 to 0.65 A																		~27 W																		100 to 240 VAC, 0.6/0.3 A, 60/50 Hz and 10.8 to 26.4 VDC, 2.3 to 0.9 A																		~26 W																		100 to 240 VAC, 0.6/0.3 A, 60/50 Hz or 9.6 to 36.6 VDC, 2.5 to 0.65 A																		~27 W																		100 to 240 VAC, 0.6/0.3 A, 60/50 Hz and 10.8 to 26.4 VDC, 2.3 to 0.9 A																		~26 W																		100 to 240 VAC, 0.6/0.3 A, 60/50 Hz or 9.6 to 36.6 VDC, 2.5 to 0.65 A																		~27 W																		100 to 240 VAC, 0.6/0.3 A, 60/50 Hz and 10.8 to 26.4 VDC, 2.3 to 0.9 A																		~26 W																		100 to 240 VAC, 0.6/0.3 A, 60/50 Hz or 9.6 to 36.6 VDC, 2.5 to 0.65 A																		~27 W																		100 to 240 VAC, 0.6/0.3 A, 60/50 Hz and 10.8 to 26.4 VDC, 2.3 to 0.9 A																		~26 W																		100 to 240 VAC, 0.6/0.3 A, 60/50 Hz or 9.6 to 36.6 VDC, 2.5 to 0.65 A																		~27 W																		100 to 240 VAC, 0.6/0.3 A, 60/50 Hz and 10.8 to 26.4 VDC, 2.3 to 0.9 A																		~26 W																		100 to 240 VAC, 0.6/0.3 A, 60/50 Hz or 9.6 to 36.6 VDC, 2.5 to 0.65 A																		~27 W																		100 to 240 VAC, 0.6/0.3 A, 60/50 Hz and 10.8 to 26.4 VDC, 2.3 to 0.9 A																		~26 W																		100 to 240 VAC, 0.6/0.3 A, 60/50 Hz or 9.6 to 36.6 VDC, 2.5 to 0.65 A																		~27 W																		100 to 240 VAC, 0.6/0.3 A, 60/50 Hz and 10.8 to 26.4 VDC, 2.3 to 0.9 A																		~26 W																		100 to 240 VAC, 0.6/0.3 A, 60/50 Hz or 9.6 to 36.6 VDC, 2.5 to 0.65 A																		~27 W																		100 to 240 VAC, 0.6/0.3 A, 60/50 Hz and 10.8 to 26.4 VDC, 2.3 to 0.9 A																		~26 W																		100 to 240 VAC, 0.6/0.3 A, 60/50 Hz or 9.6 to 36.6 VDC, 2.5 to 0.65 A																		~27 W																		100 to 240 VAC, 0.6/0.3 A, 60/50 Hz and 10.8 to 26.4 VDC, 2.3 to 0.9 A																		~26 W																		100 to 240 VAC, 0.6/0.3 A, 60/50 Hz or 9.6 to 36.6 VDC, 2.5 to 0.65 A																		~27 W																		100 to 240 VAC, 0.6/0.3 A, 60/50 Hz and 10.8 to 26.4 VDC, 2.3 to 0.9 A																		~26 W																		100 to 240 VAC, 0.6/0.3 A, 60/50 Hz or 9.6 to 36.6 VDC, 2.5 to 0.65 A																		~27 W																		100 to 240 VAC, 0.6/0.3 A, 60/50 Hz and 10.8 to 26.4 VDC, 2.3 to 0.9 A																		~26 W																		100 to 240 VAC, 0.6/0.3 A, 60/50 Hz or 9.6 to 36.6 VDC, 2.5 to 0.65 A																		~27 W																		100 to 240 VAC, 0.6/0.3 A, 60/50 Hz and 10.8 to 26.4 VDC, 2.3 to 0.9 A																		~26 W																		100 to 240 VAC, 0.6/0.3 A, 60/50 Hz or 9.6 to 36.6 VDC, 2.5 to 0.65 A																		~27 W																		100 to 240 VAC, 0.6/0.3 A, 60/50 Hz and 10.8 to 26.4 VDC, 2.3 to 0.9 A																		~26 W																		100 to 240 VAC, 0.6/0.3 A, 60/50 Hz or 9.6 to 36.6 VDC, 2.5 to 0.65 A																		~27 W																		100 to 240 VAC, 0.6/0.3 A, 60/50 Hz and 10.8 to 26.4 VDC, 2.3 to 0.9 A																		~26 W																		100 to 240 VAC, 0.6/0.3 A, 60/50 Hz or 9.6 to 36.6 VDC, 2.5 to 0.65 A																		~27 W																		100 to 240 VAC, 0.6/0.3 A, 60/50 Hz and 10.8 to 26.4 VDC, 2.3 to 0.9 A																		~26 W																		100 to 240 VAC, 0.6/0.3 A, 60/50 Hz or 9.6 to 36.6 VDC, 2.5 to 0.65 A																		~27 W																		100 to 240 VAC, 0.6/0.3 A, 60/50 Hz and 10.8 to 26.4 VDC, 2.3 to 0.9 A																		~26 W																		100 to 240 VAC, 0.6/0.3 A, 60/50 Hz or 9.6 to 36.6 VDC, 2.5 to 0.65 A																		~27 W																		100 to 240 VAC, 0.6/0.3 A, 60/50 Hz and 10.8 to 26.4 VDC, 2.3 to 0.9 A																		~26 W																		100 to 240 VAC, 0.6/0.3 A, 60/50 Hz or 9.6 to 36.6 VDC, 2.5 to 0.65 A																		~27 W																		100 to 240 VAC, 0.6/0.3 A, 60/50 Hz and 10.8 to 26.4 VDC, 2.3 to 0.9 A																		~26 W																		100 to 240 VAC, 0.6/0.3 A, 60/50 Hz or 9.6 to 36.6 VDC, 2.5 to 0.65 A																		~27 W																		100 to 240 VAC, 0.6/0.3 A, 60/50 Hz and 10.8 to 26.4 VDC, 2.3 to 0.9 A																		~26 W																		100 to 240 VAC, 0.6/0.3 A, 60/50 Hz or 9.6 to 36.6 VDC, 2.5 to 0.65 A																		~27 W																		100 to 240 VAC, 0.6/0.3 A, 60/50 Hz and 10.8 to 26.4 VDC, 2.3 to 0.9 A																		~26 W																		100 to 240 VAC, 0.6/0.3 A, 60/50 Hz or 9.6 to 36.6 VDC, 2.5 to 0.65 A																		~27 W																		100 to 240 VAC, 0.6/0.3 A, 60/50 Hz and 10.8 to 26.4 VDC, 2.3 to 0.9 A																		~26 W																		100 to 240 VAC, 0.6/0.3 A, 60/50 Hz or 9.6 to 36.6 VDC, 2.5 to 0.65 A																		~27 W																		100 to 240 VAC, 0.6/0.3 A, 60/50 Hz and 10.8 to 26.4 VDC, 2.3 to 0.9 A																		~26 W																		100 to 240 VAC, 0.6/0.3 A, 60/50 Hz or 9.6 to 36.6 VDC, 2.5 to 0.65 A																		~27 W																		100 to 240 VAC, 0.6/0.3 A, 60/50 Hz and 10.8 to 26.4 VDC, 2.3 to 0.9 A																		~26 W																		100 to 240 VAC, 0.6/0.3 A, 60/50 Hz or 9.6 to 36.6 VDC, 2.5 to 0.65 A																		~27 W																		100 to 240 VAC, 0.6/0.3 A, 60/50 Hz and 10.8 to 26.4 VDC, 2.3 to 0.9 A																		~26 W																		100 to 240 VAC, 0.6/0.3 A, 60/50 Hz or 9.6 to 36.6 VDC, 2.5 to 0.65 A																		~27 W																		100 to 240 VAC, 0.6/0.3 A, 60/50 Hz and 10.8 to 26.4 VDC, 2.3 to 0.9 A																		~26 W																		100 to 240 VAC, 0.6/0.3 A, 60/50 Hz or 9.6 to 36.6 VDC, 2.5 to 0.65 A																		~27 W																		100 to 240 VAC, 0.6/0.3 A, 60/50 Hz and 10.8 to 26.4 VDC, 2.3 to 0.9 A																		~26 W																		100 to 240 VAC, 0.6/0.3 A, 60/50 Hz or 9.6 to 36.6 VDC, 2.5 to 0.65 A																		~27 W																		100 to 240 VAC, 0.6/0.3 A, 60/50 Hz and 10.8 to 26.4 VDC, 2.3 to 0.9 A																		~26 W																		100 to 240 VAC, 0.6/0.3 A, 60/50 Hz or 9.6 to 36.6 VDC, 2.5 to 0.65 A																		~27 W																		100 to 240 VAC, 0.6/0.3 A, 60/50 Hz and 10.8 to 26.4 VDC, 2.3 to 0.9 A																		~26 W																		100 to 240 VAC, 0.6/0.3 A, 60/50 Hz or 9.6 to 36.6 VDC, 2.5 to 0.65 A																		~27 W																		100 to																	